



Download [FollowMe](#) Print Driver:

**YOU MUST HAVE THE NEW FOLLOW ME DRIVER LOADED TO ACCESS NEW PRINTER CAPABILITIES SUCH AS COLOR PRINTING AND STAPLING.**

**Method 1:**

- Run file explorer (NOT THE BROWSER – this is the file explorer in windows), and type \\emprint\followme in the address bar (where the path is displayed top left of the window). This installs the driver and print queue on Windows 7 or Windows 10.

**Method 2:**

- Go to control panel, add printer, network shared, and type \\emprint\followme in the search box.

**Method 3:**

**If You Have the Printer Installer (PI) App- Process Below**

Screen shots may look a little different from Windows 7 to Windows 10.

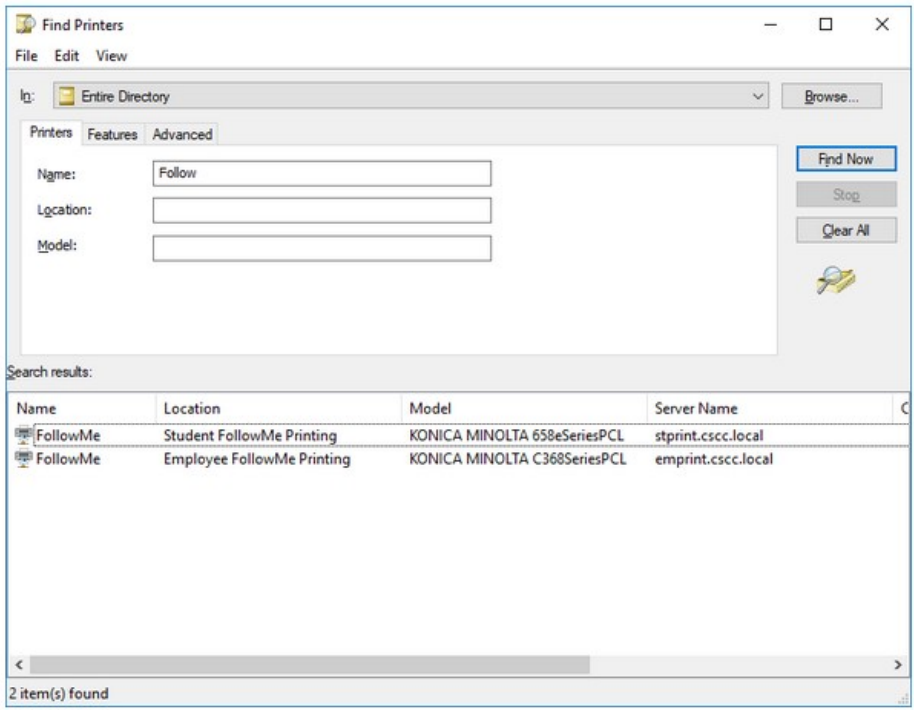
- 1) Click the WINDOWS START MENU
- 2) VIEW ALL PROGRAMs
- 3) Scroll to CSCC APPLICATIONS
- 4) Select **INSTALL PRINTER**
- 5) You will see the box below.
- 6) Type **FOLLOW** in the Name Field.
- 7) Then select **FIND NOW**.



KONICA MINOLTA

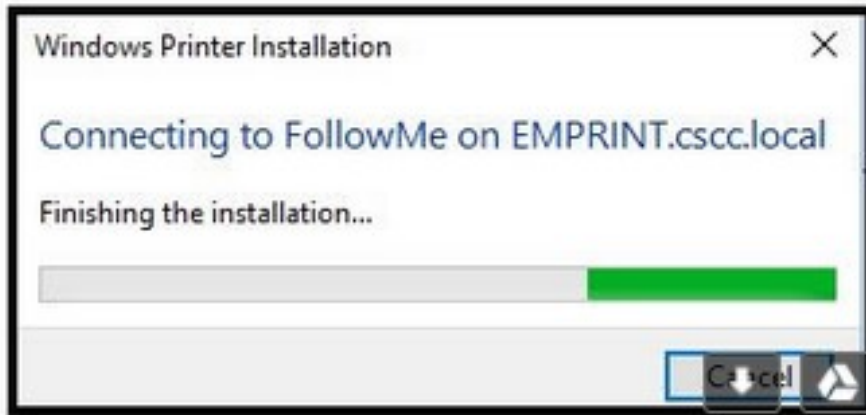


- 8) Select (Double Click) the **FollowMe**
  - a. Employee FollowMe printing is needed to print to employee MFD's.
  - b. Student FollowMe printing is needed to print to the Student printers (Library, Computer Commons)



You will get the screen below while driver is being loaded





- 9) Go to the WINDOWS START
- 10) Type **DEFAULT**
- 11) Select DEFAULT PRINTER
- 12) Select FOLLOWME as illustrated below



KONICA MINOLTA