



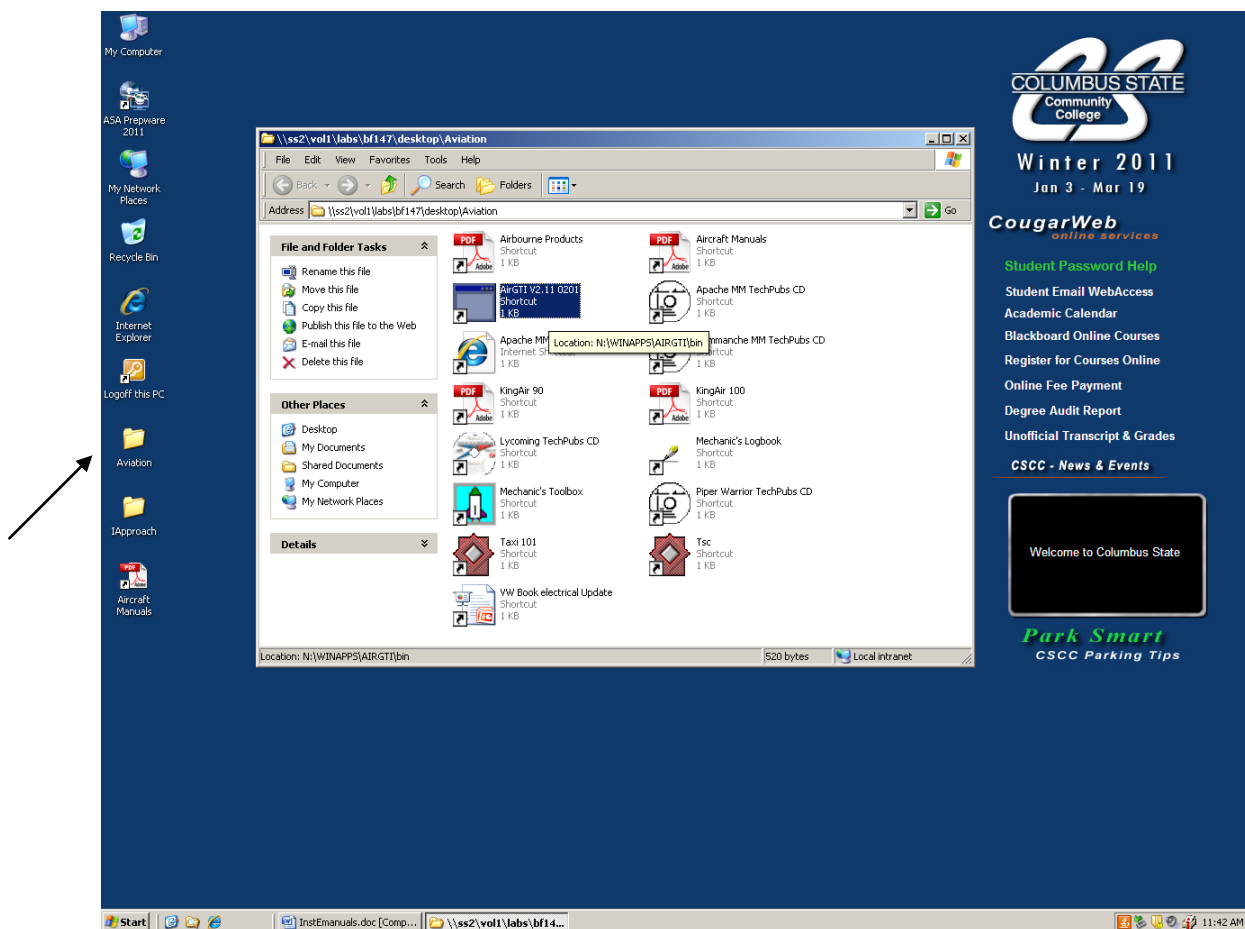
Instructions
For Using
Electronic Manuals
CSCC Aviation Maintenance Technology
Bolton Field

INTRODUCTION

These instructions will help you in accessing the electronic manuals housed at the Bolton field Facility. These manuals can be accessed from all the CSCC computers hardwired into the network. All of programs **require that you be logged in**. If you cannot access the program, make sure that you are logged in and try to access again. Not all the computer screens will look identical, so you may have to look closely to find the correct icon or menu.

B-727 Airframe Manuals

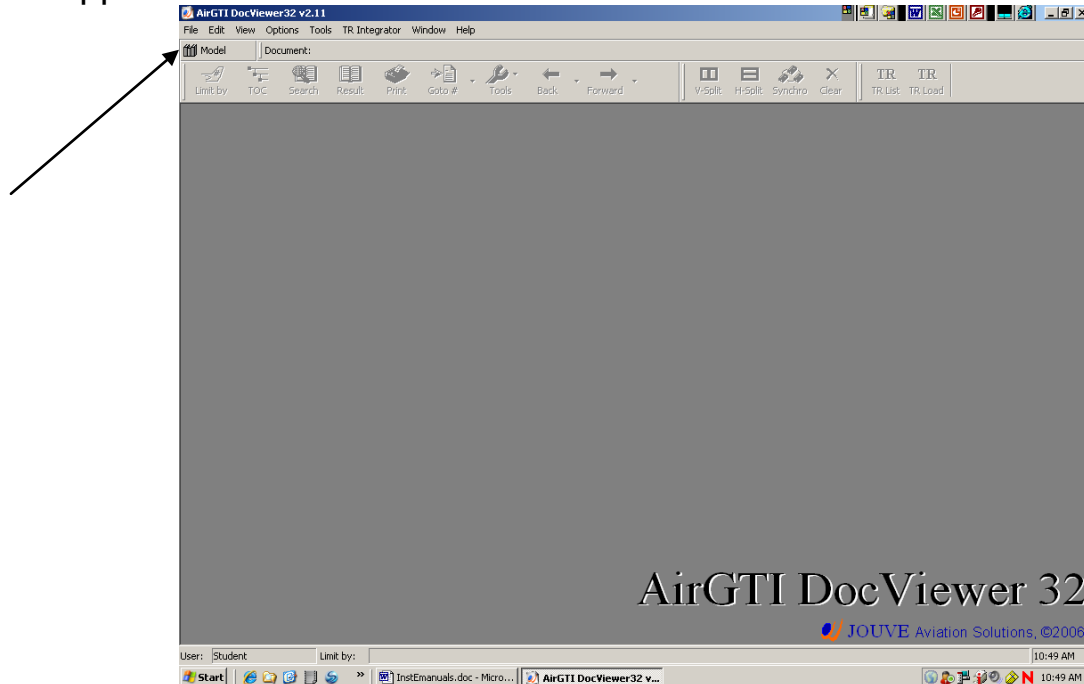
The program that is used for the Boeing Manuals is AirGTI. In the computer lab you will need to go to File Folder on the Desktop or Start, Programs, Aviation, AirGTI to open the program.



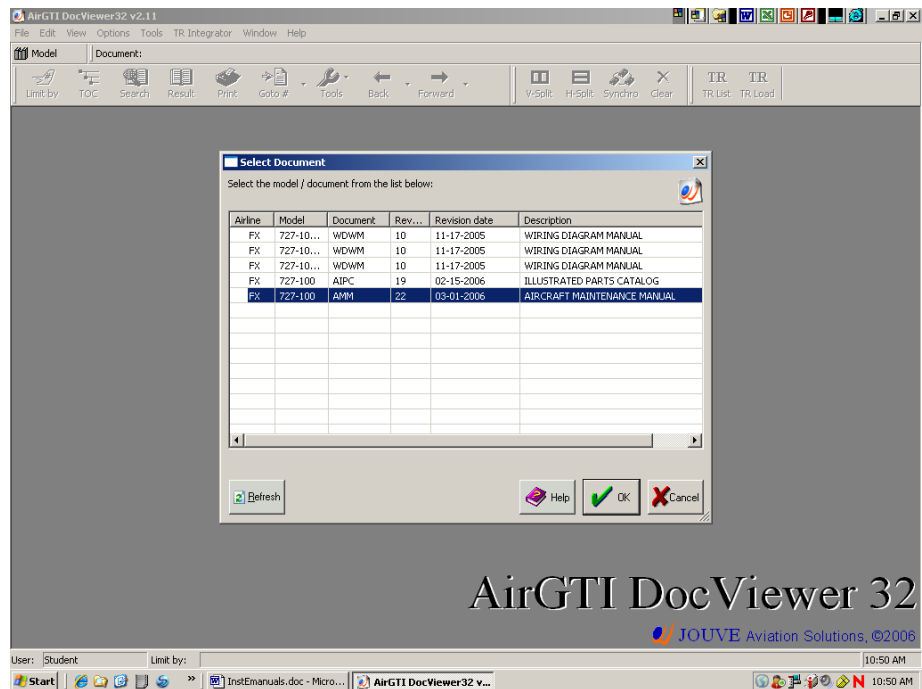
Double-click on the icon and the program will start.

B-727 continued

Once you click on the AirGTI icon the following screen will appear:

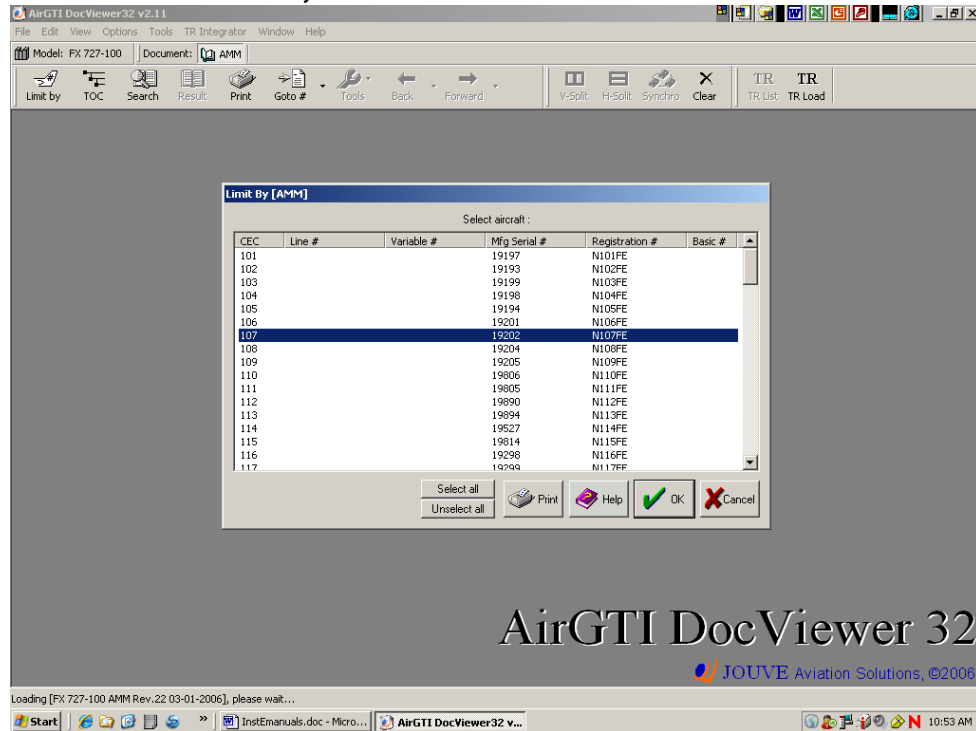


Click on the Model Tab in the upper left hand corner. The next screen will show the manuals that you can access.

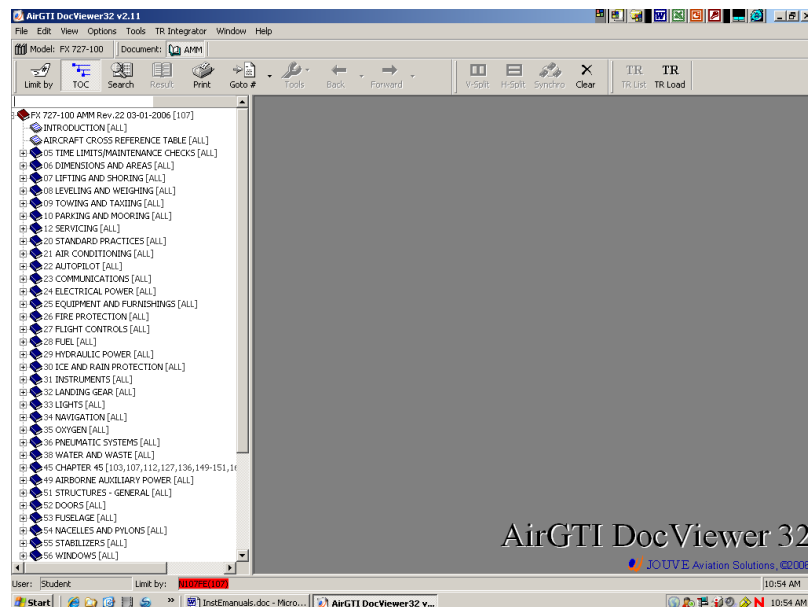


B-727 continued

After you choose which manual and click “OK” the next screen will populate all the serial numbers that are available. **CSCC’s AIRCRAFT IS S/N 107, N107FE**

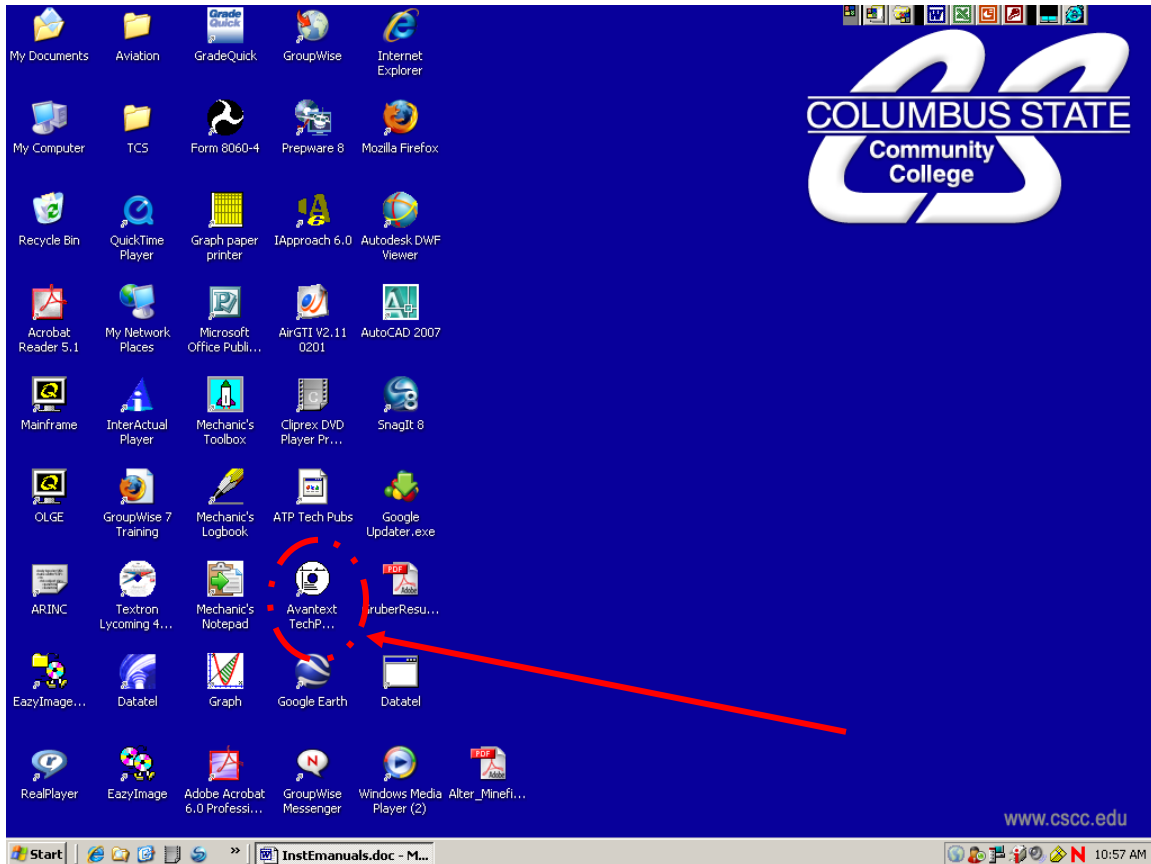


Highlight S/N 107 and click “OK”. The Chapters will be along the left side and text will be in the middle.



Cessna 210 and 310 & Continental Engines

These manuals use DVD format and are currently only available for use in rooms 119, 138, 131 and 146. Click on the Avantext Tech Pubs Icon. This program should be available in the computer lab starting April 2011. (Limited sections are available on the Aircraft Manuals Page – shown later)



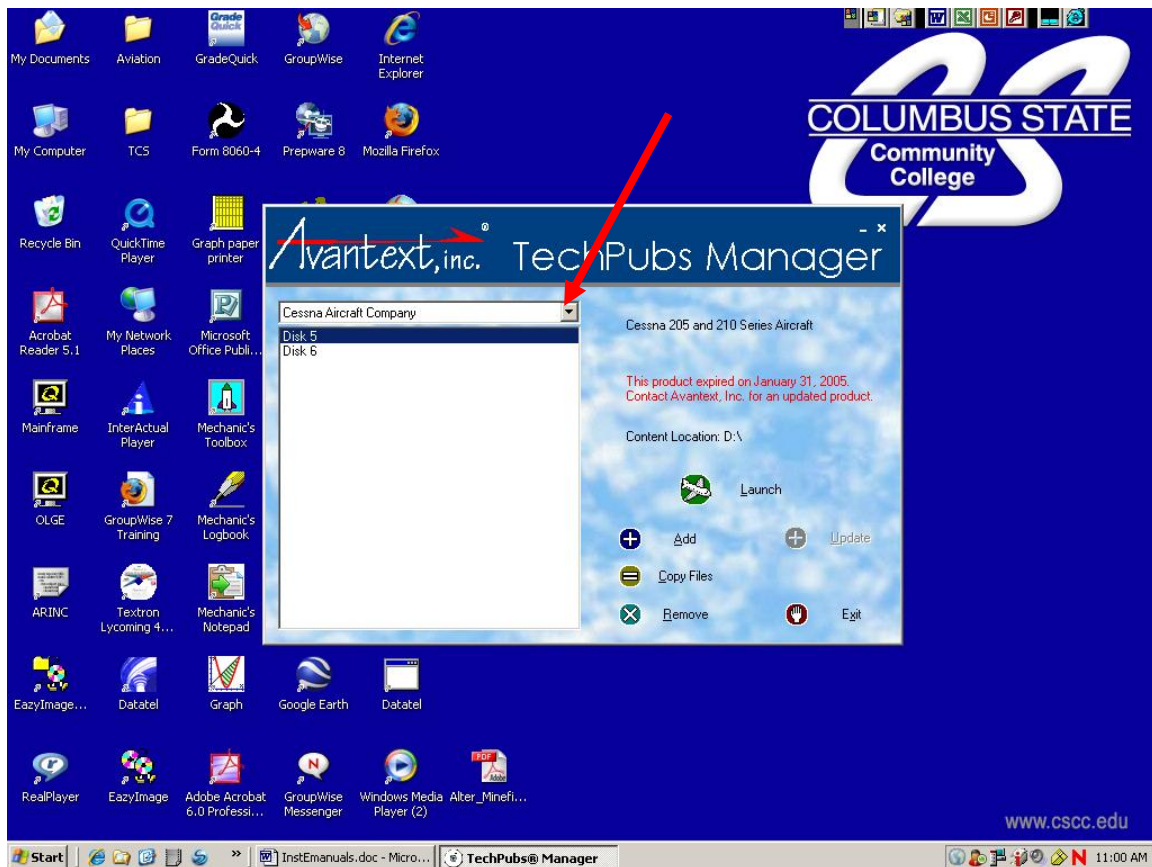
Cessna 210 and 310

The next screen will ask which disc to use.

C-210 is Disc 5

C-310 is Disc 6

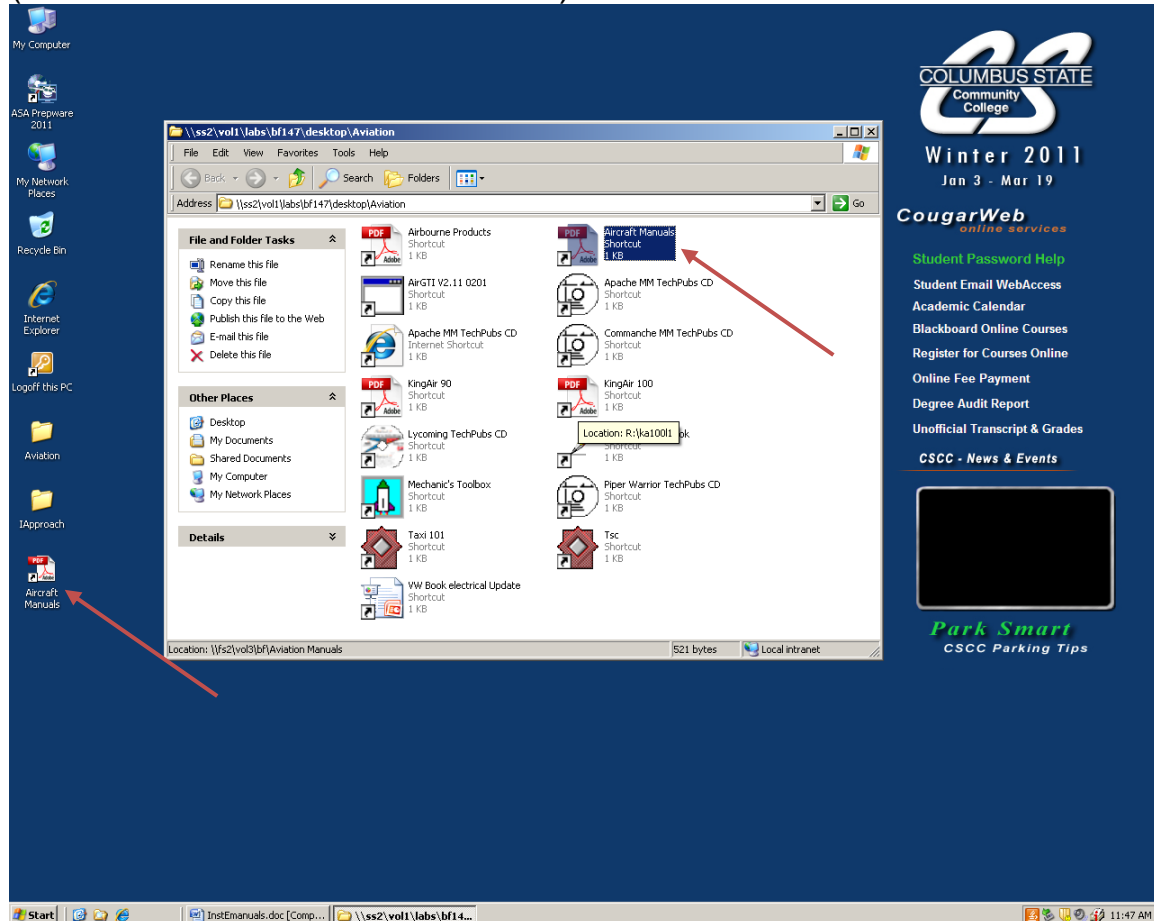
Use the Drop-down menu to change to Continental Engines



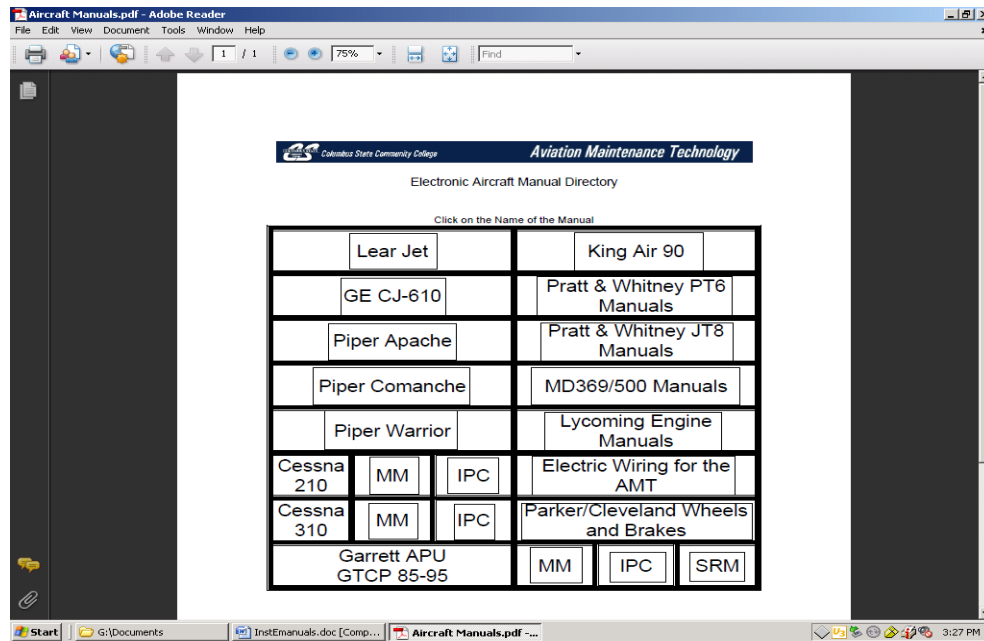
Highlight the appropriate disc and hit “Launch”.

Aircraft Manuals

On the desktop you will see a PDF link called Aircraft Manuals.
(Also found in the Aviation Folder)



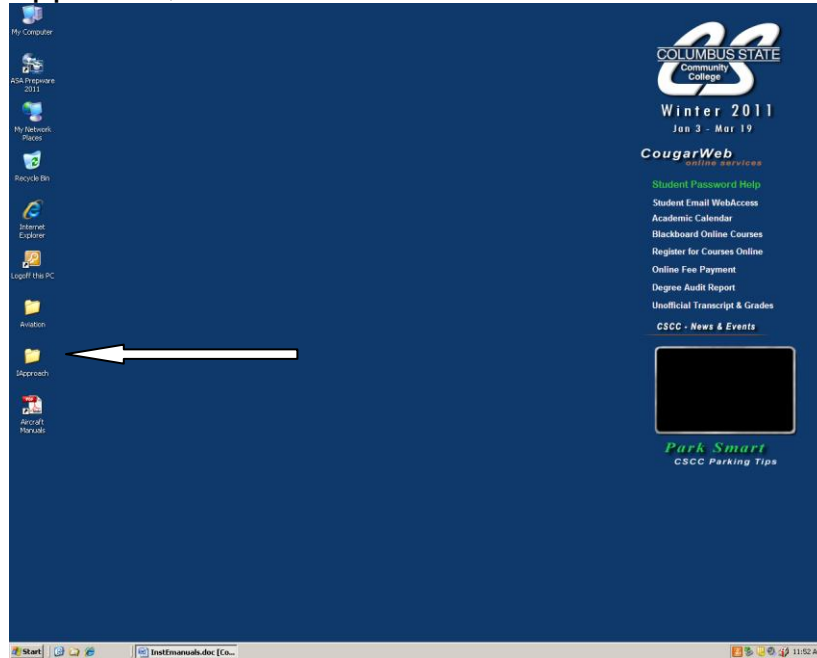
Double click on this icon and it will bring up this page.



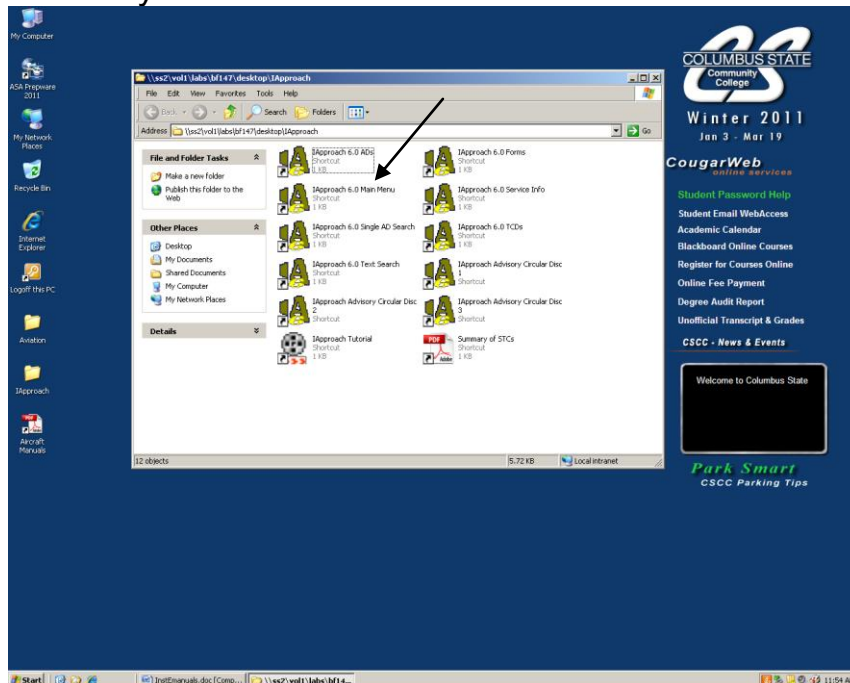
Move your pointer over what manual you would like and double click.
 It will bring up the appropriate manual
 (Note: the Cessna 210 and 310 MM and IPC can be accessed here –
 but you will not have SB and SL)

Airworthiness Directives, Regulations, & TCDS

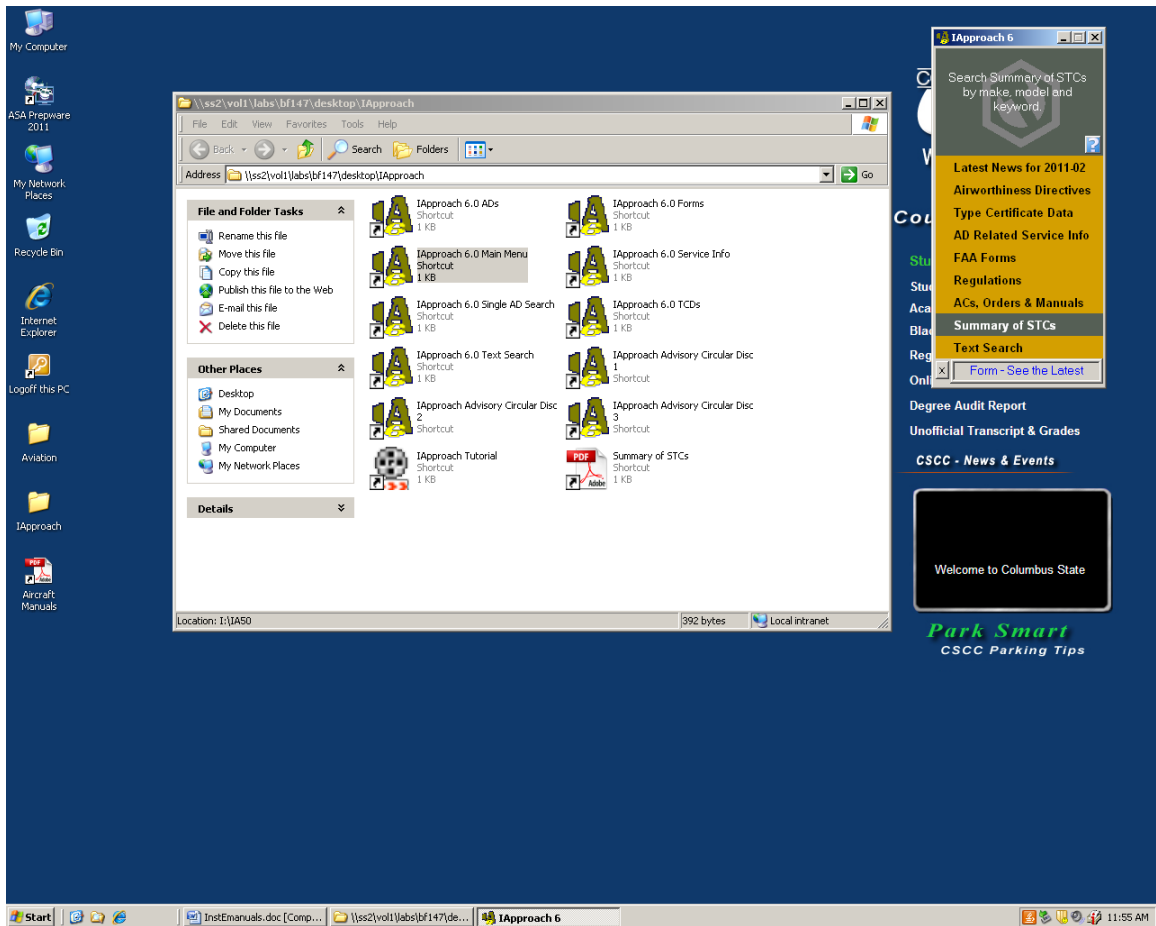
The program used for these documents is IApproach, published by TData. In the Computer lab you can access this program by going to the IA Approach Folder on the desktop or Start, Programs, Aviation, IApproach, Main Menu



Open folder and you will see this screen



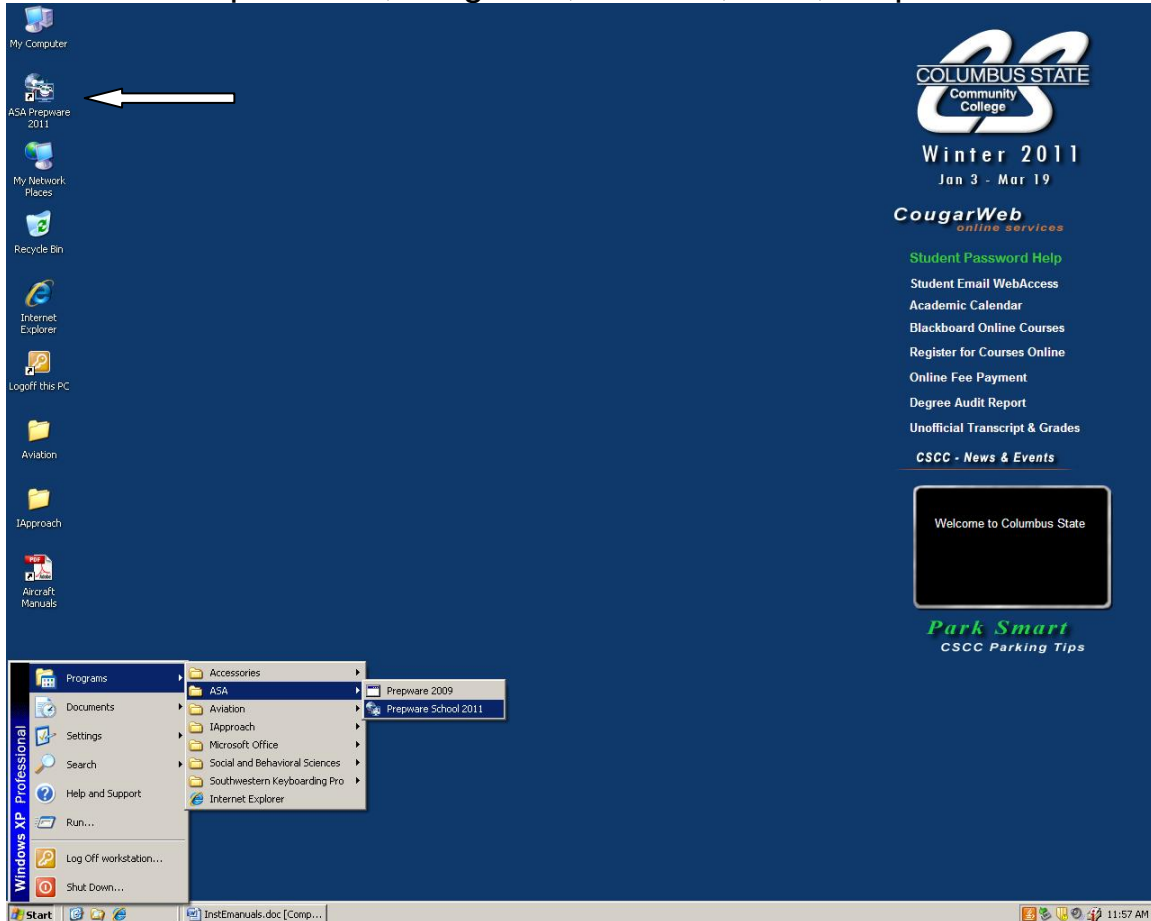
Click on the Main Menu shortcut. This will bring up a menu on the right side of the screen:



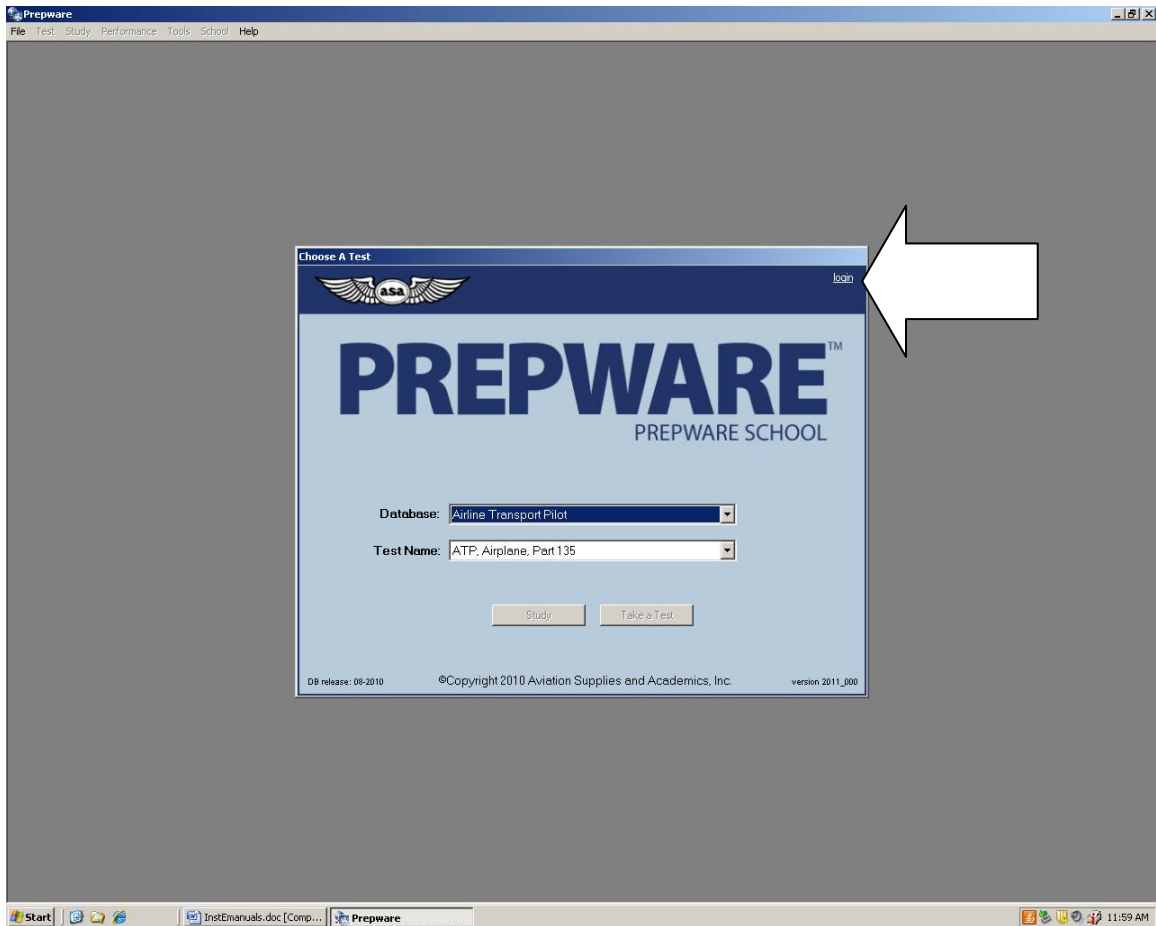
In the classrooms, there will be an Icon in the desktop labeled IAApproach. Just click that icon and the main menu will appear.

ASA Prepware

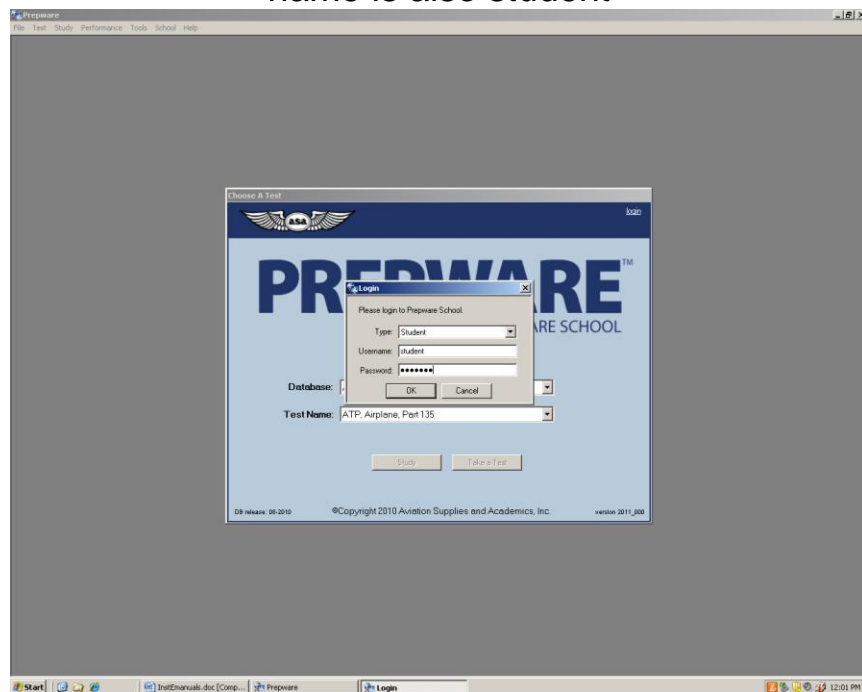
This program is test prep software for the General, Airframe, and Powerplant written exams. You may want to use it to prepare for class exams as well. To access the program by clicking on the Icon on the desktop or Start, Programs, Aviation, ASA, Prepware 2011



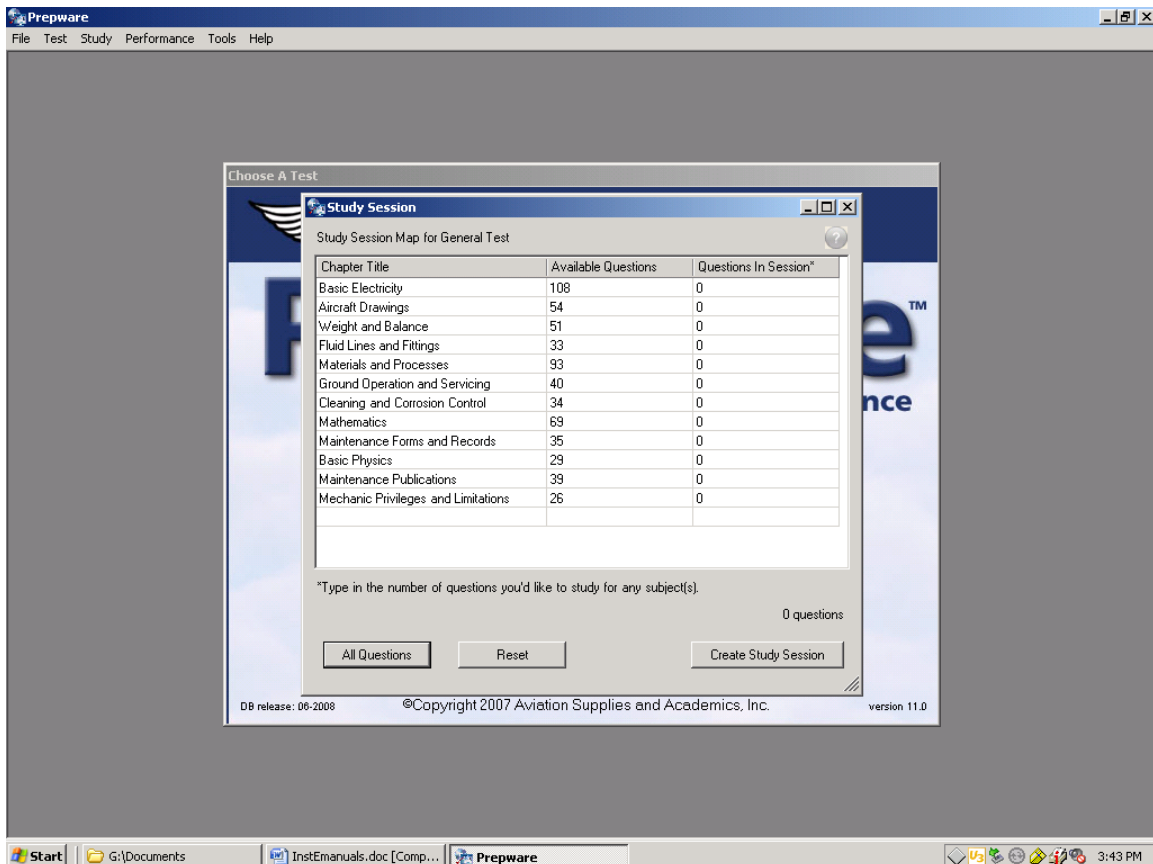
Double click and the following screen will appear



YOU MUST LOGIN – Password is “student” (Type and and User name is also student



Click on the appropriate database (General, Airframe, Powerplant other databases are available) or by clicking on the Study button you can create a study session for only the appropriate subject areas you want.



In the classrooms you can access this program by clicking on the Prepware icon.