

Set up VMware - Windows Computer

What is a Virtual Machine?

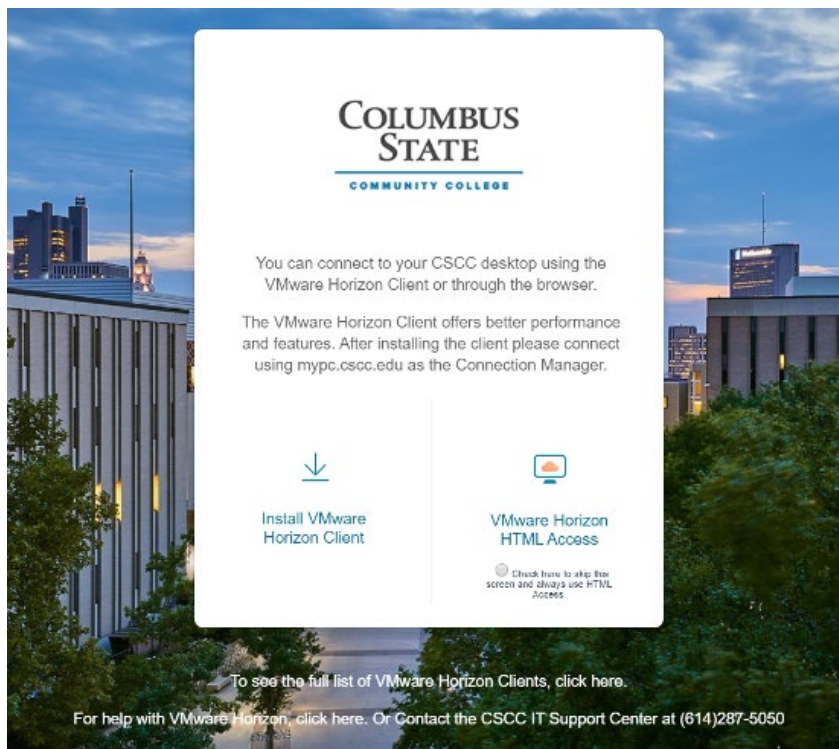
A **Virtual Machine** is a computer emulation that behaves as a regular computer. It can have specific software installed, and has access to the Columbus State network, intranet, and network drives.

VMware Horizon View is an application for your computer, tablet, or even phone that allows you to connect to a Virtual Machine.

When using a Virtual Machine, make sure you **save your data to cloud or network storage** so it does not get lost. If you save your data locally to the virtual machine, it may be gone the next time you log in.

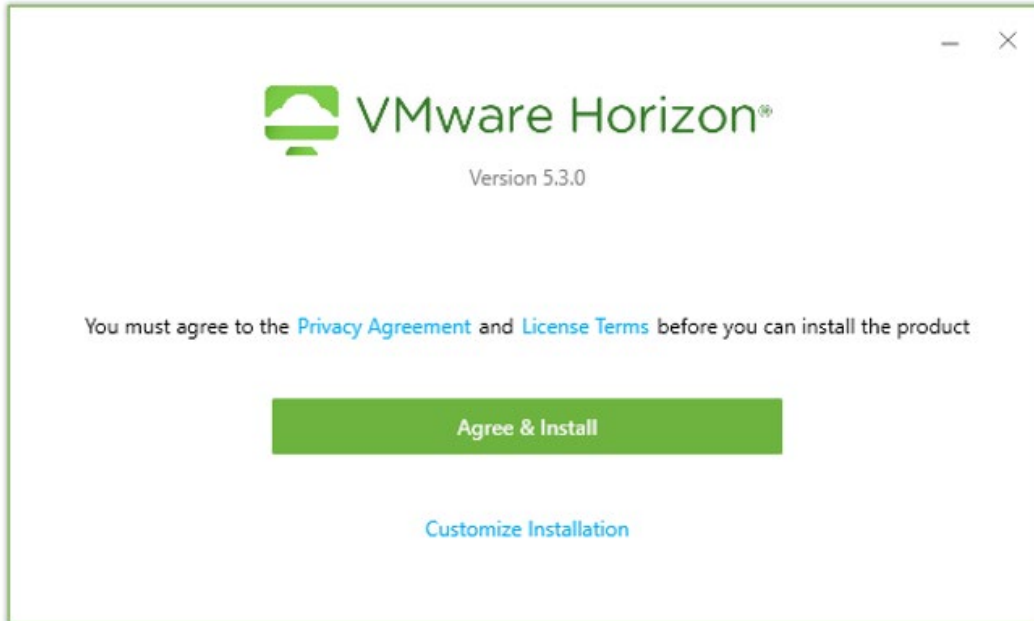
Install VMware Horizon View

1. Open a web browser and browse to <https://mypc.csc.edu>
2. Select **Install VMware Horizon Client** to download the Horizon Client for Windows

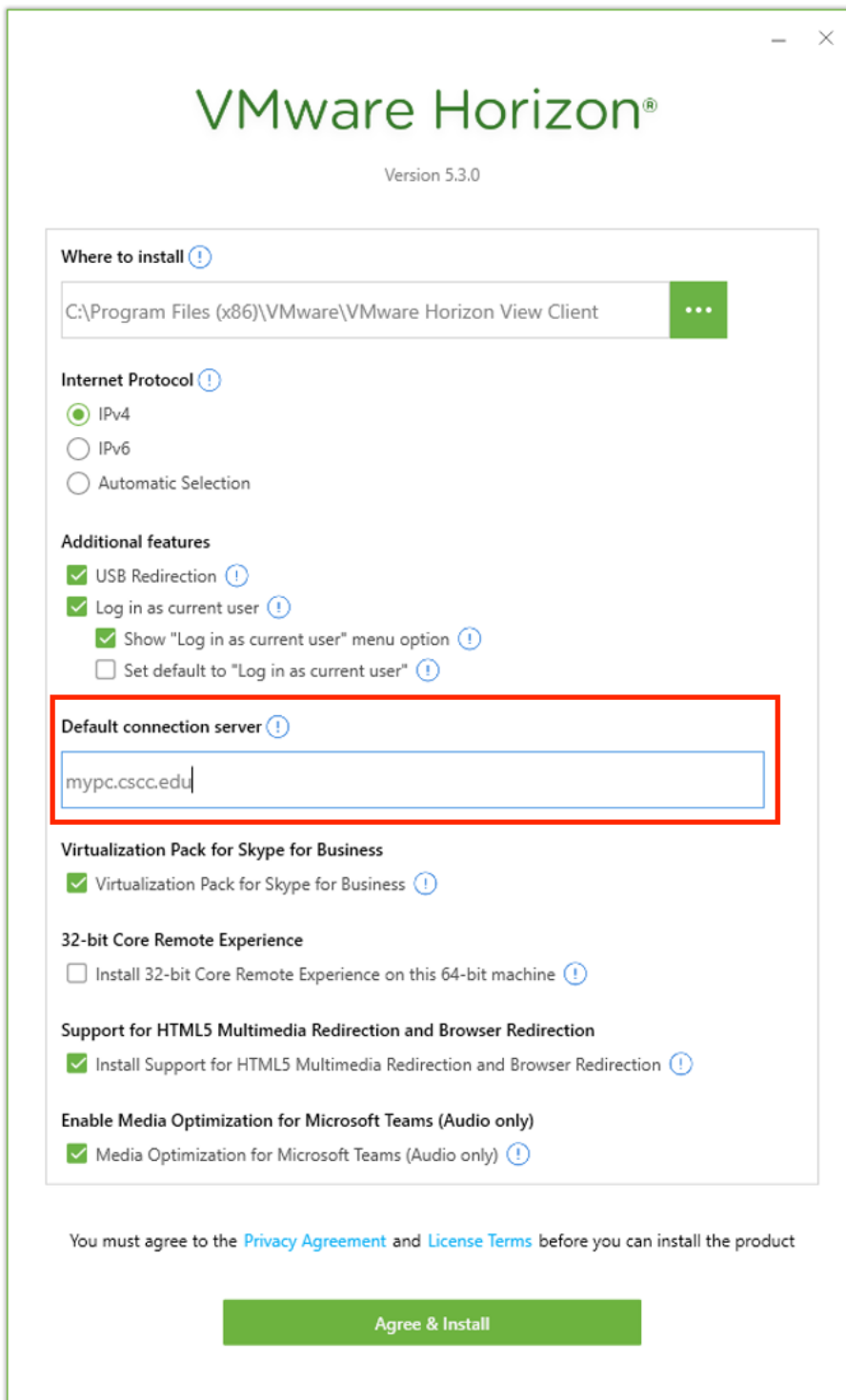


3. After downloading the file, execute the installer

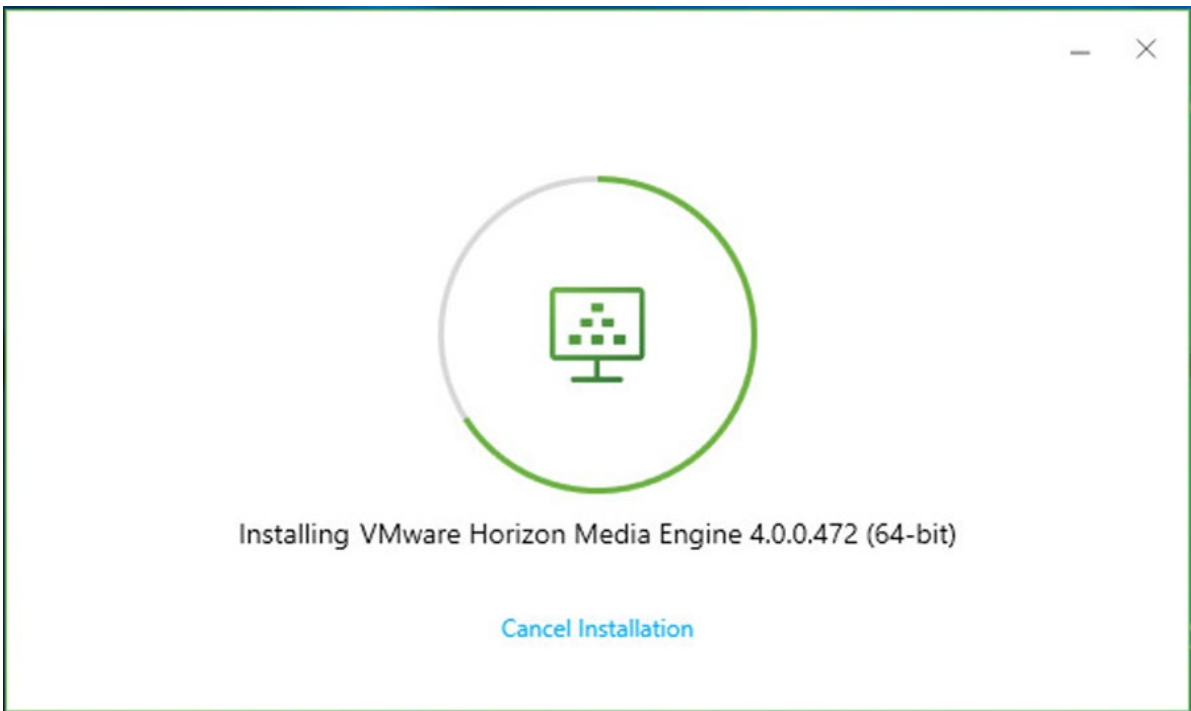
4. On the VMware Horizon install screen Click **Customize Installation**



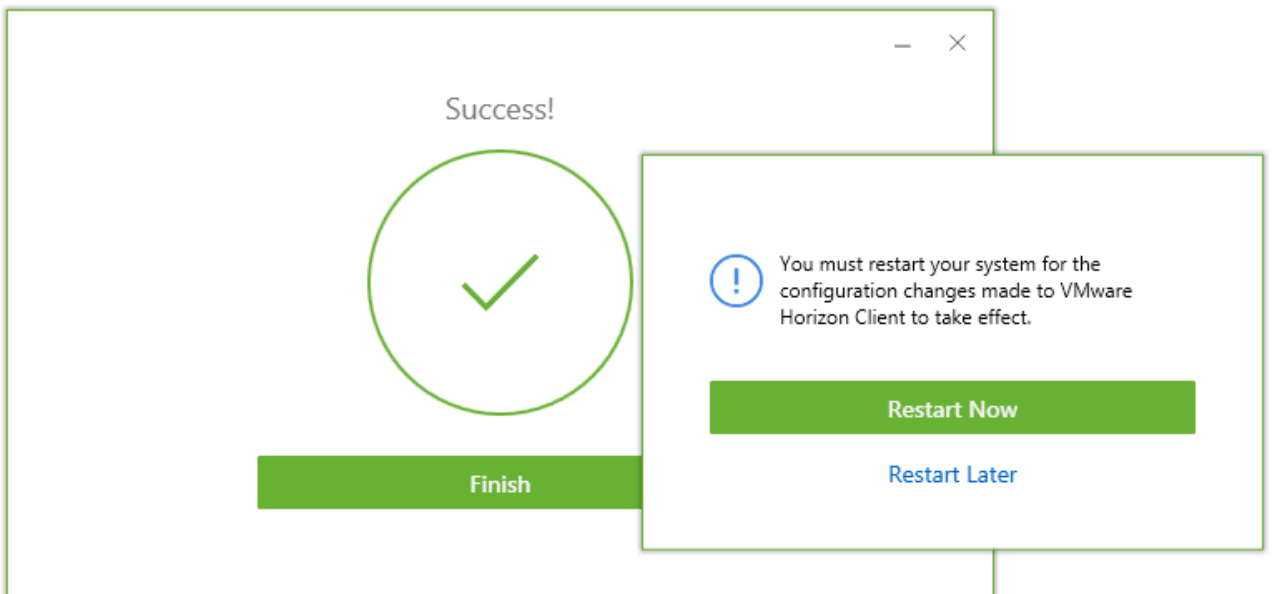
5. On the Customization Page, enter **mypc.csc.c.edu** in the *Default connection server* field, then Click **Agree & Install**



6. The installation process will display a splash screen indicating the current status of the installation



7. When the Installation is complete it will show the Success screen - Click **Finish**



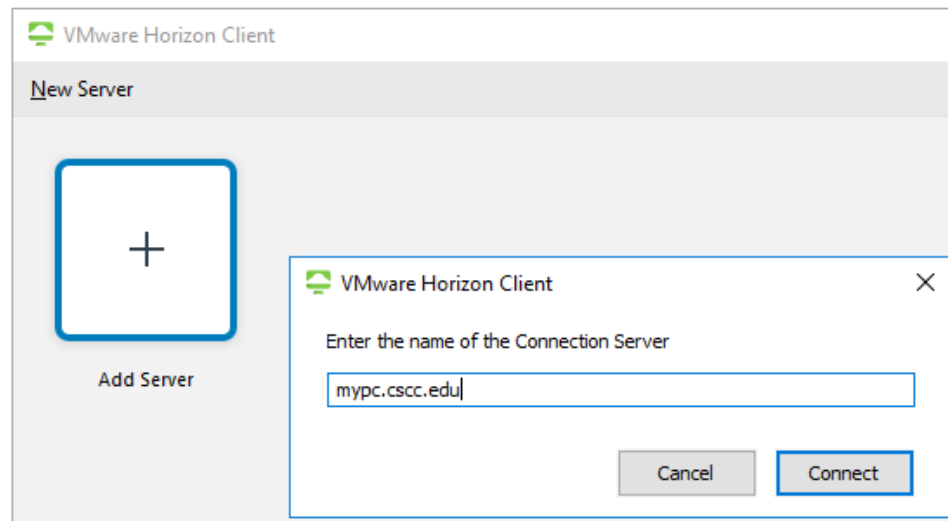
8. When prompted, reboot your computer by clicking **Restart Now**

Connect to the Virtual Machine

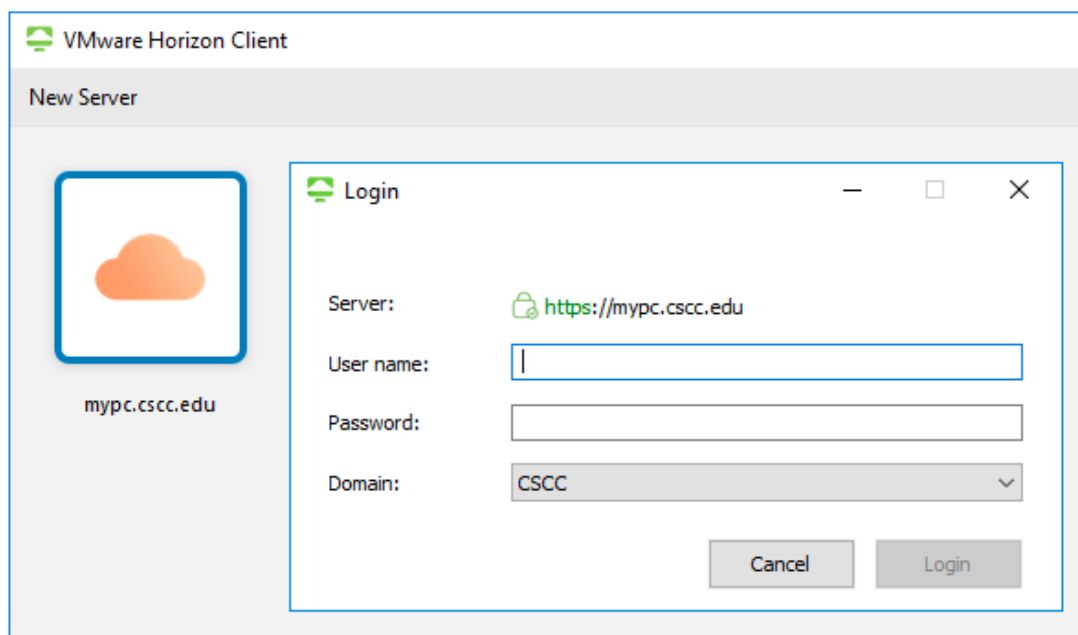
1. Open the VMware Horizon Client
2. Verify that the Connection Server shown is **mypc.csc.c.edu**, then double click and proceed to step 3

If it is **not** listed:

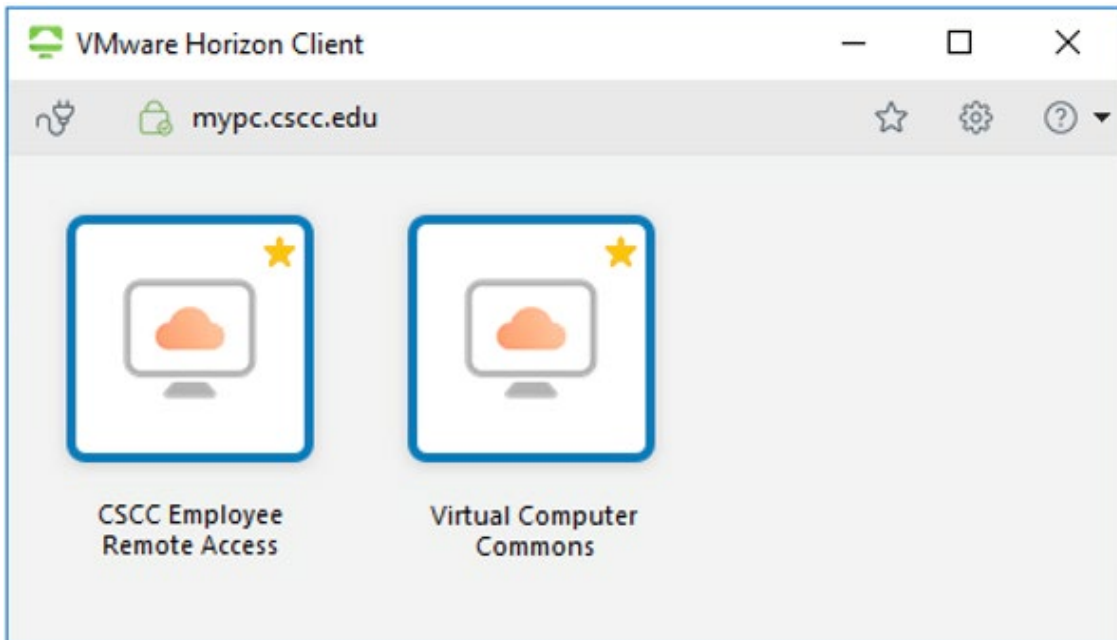
- a. Double click **Add Server**
- b. Enter **mypc.csc.c.edu** for the name of the Connection Server
- c. Click **Connect**



3. When prompted enter your **username** (not email address) and **password** and click **Login**
the Domain should be CSCC and does not need to be changed



4. After logging into the Client, you will be presented with a list of Virtual Machines to which you can connect



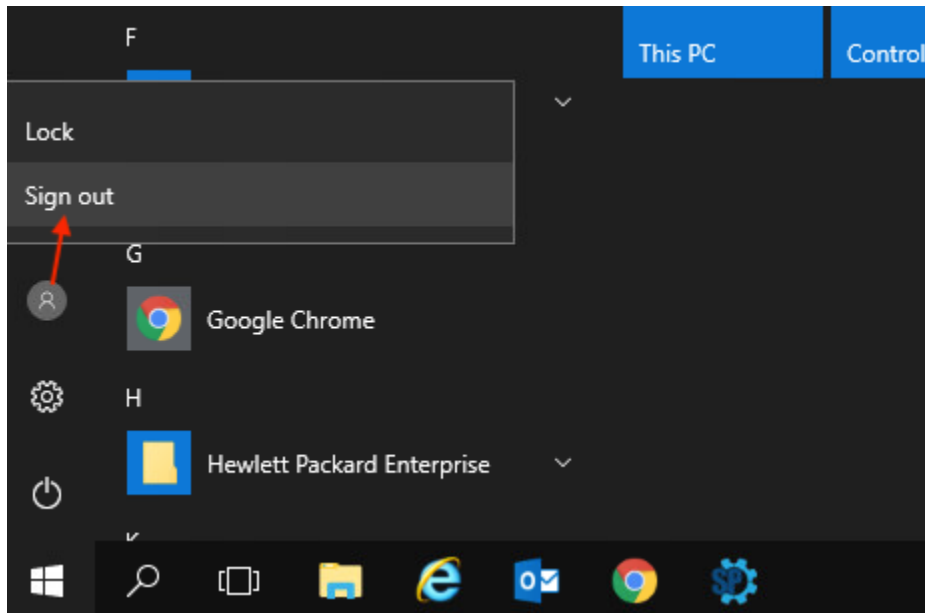
It is important to select the correct machine to ensure you have access to your software and data. Certain courses may require students and instructors to connect to specialized pools specific to that course.

5. For **standard software** availability select
 - a. For employees: **CSCC Employee Remote Access**
Note: before employees have access, they need supervisor approval in a request sent to the IT Support Center (help@csc.c.edu)
 - b. For students: **Virtual Computer Commons**
6. After you connect to the Virtual Machine, if prompted, enter your username and password to login to Windows

Disconnect from the Virtual Machine

To disconnect from a Virtual Machine, simply **Sign out**, like you would on a normal lab computer.

1. Click the **Start Menu**
2. Click on the user icon ()
3. Click **Sign out**



Once you have downloaded the VMware Horizon Client icon onto your computer, you should see: mypc.csc.c.edu icon > double click to get the Login > enter Password > click on Integrated Media Virtual Machine > this will take you to the CSCC desktop (you may need to enter in your username and password again) > once you are in you should be able to open the Adobe software.

After clicking on whichever Adobe software you will using, you get a pop-up window asking you to Sign In > enter in CSCC username and password > Select Account: Company or School Account > pop-up window Connecting to fs.csc.c.edu (you will again be asked to enter in their username & password) > click OK

This does not mean that they have the Adobe software on their computers. This is a way from them to use the CSCC software as if they were in one of our labs down on campus.